

# Historical vs UltraFine Geochemical Data

## Geological Information

Musgrave Ranges WA

Multiple Mafic Intrusions

Regolith: 10 to 20m  
Transported sandy cover

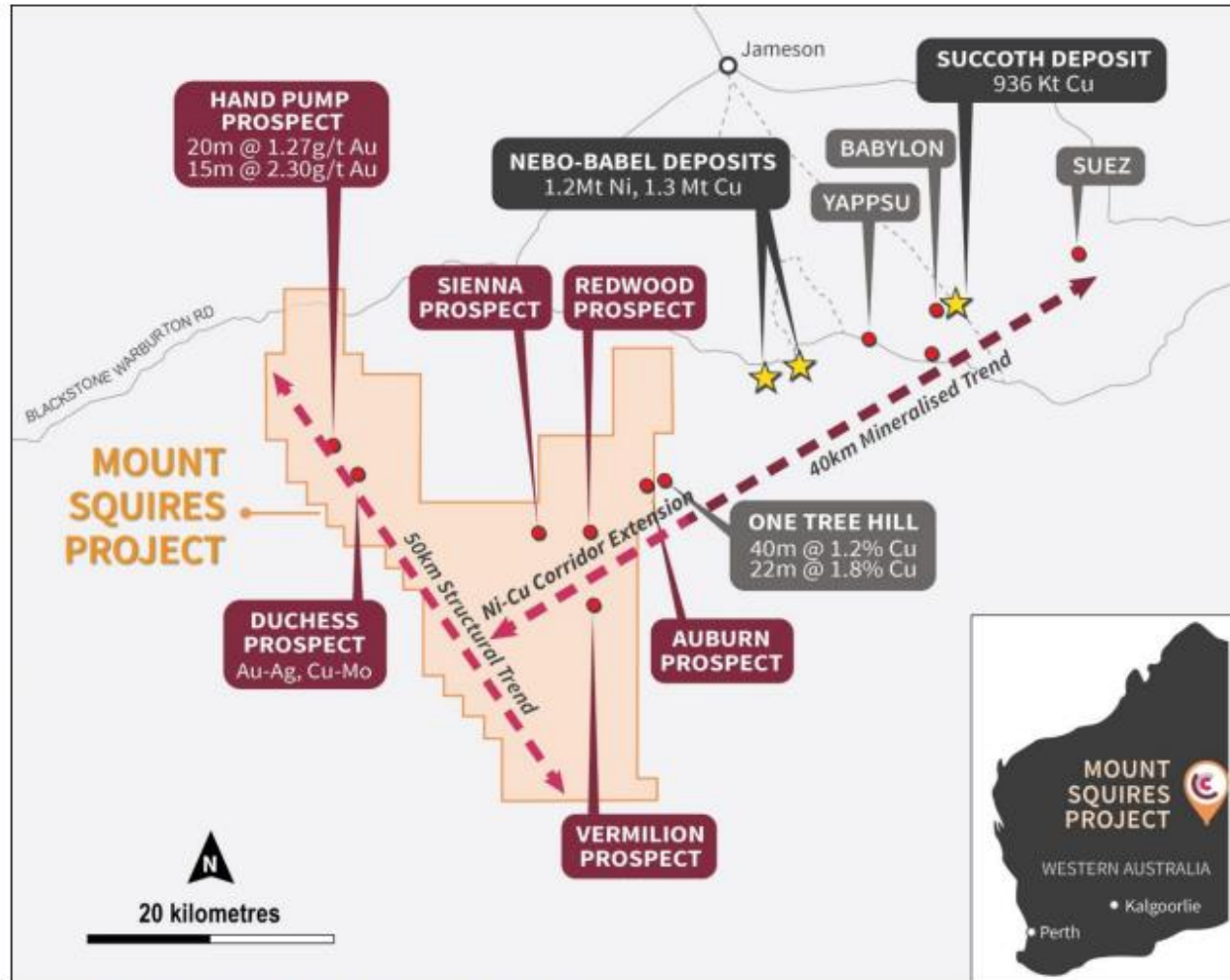


Figure 6. Mount Squires Project with prospect locations.

## Disclaimer

This data is presented here for Geochemist information only.

This information is not for investment purposes.

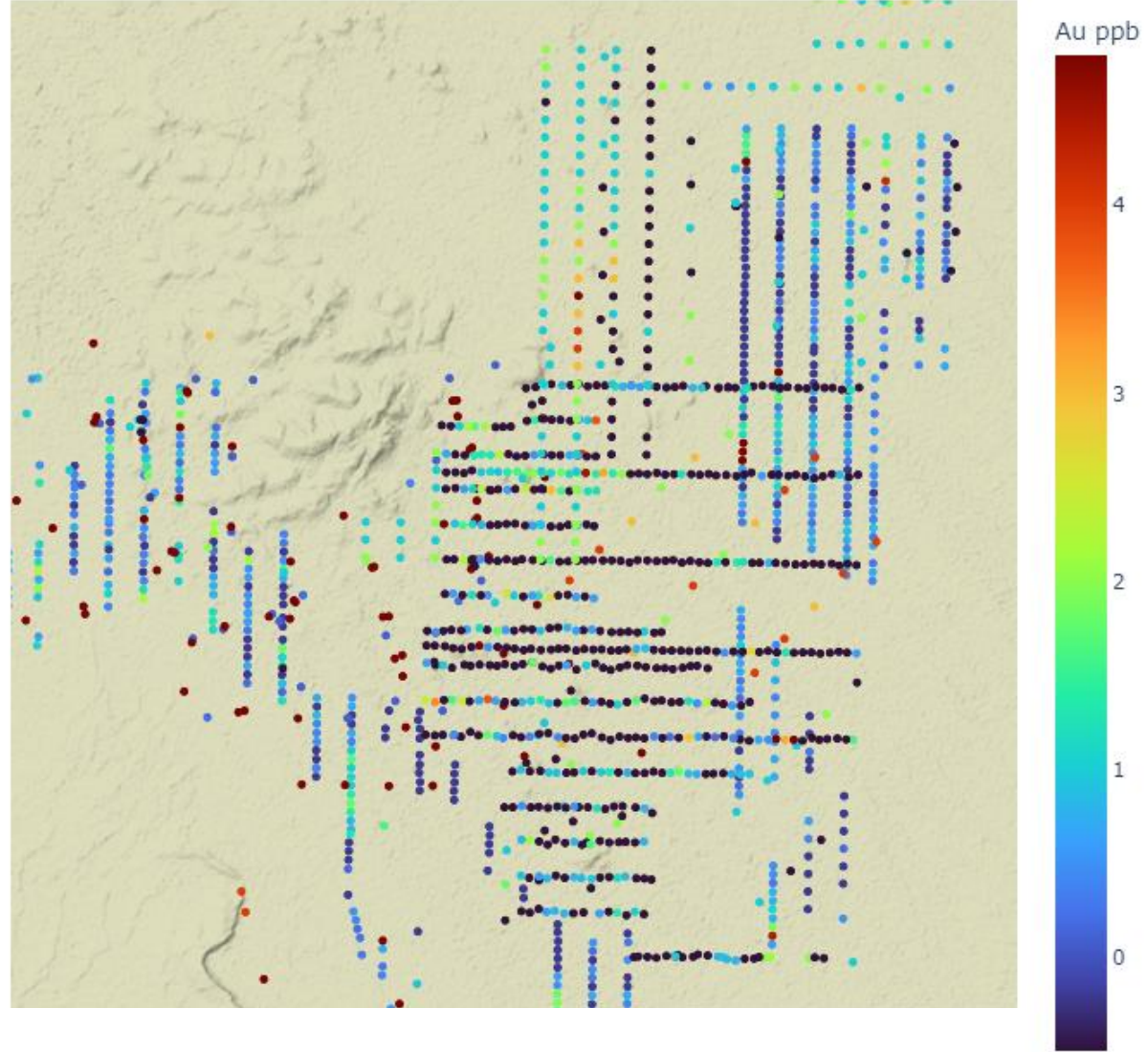
An ASX report pertaining to this data is presented by Caspin Resources Ltd here:

[Caspin ASX Release \(weblink.com.au\)](https://www.caspin.com.au)

Map Ref. Fig 6, Page 8.

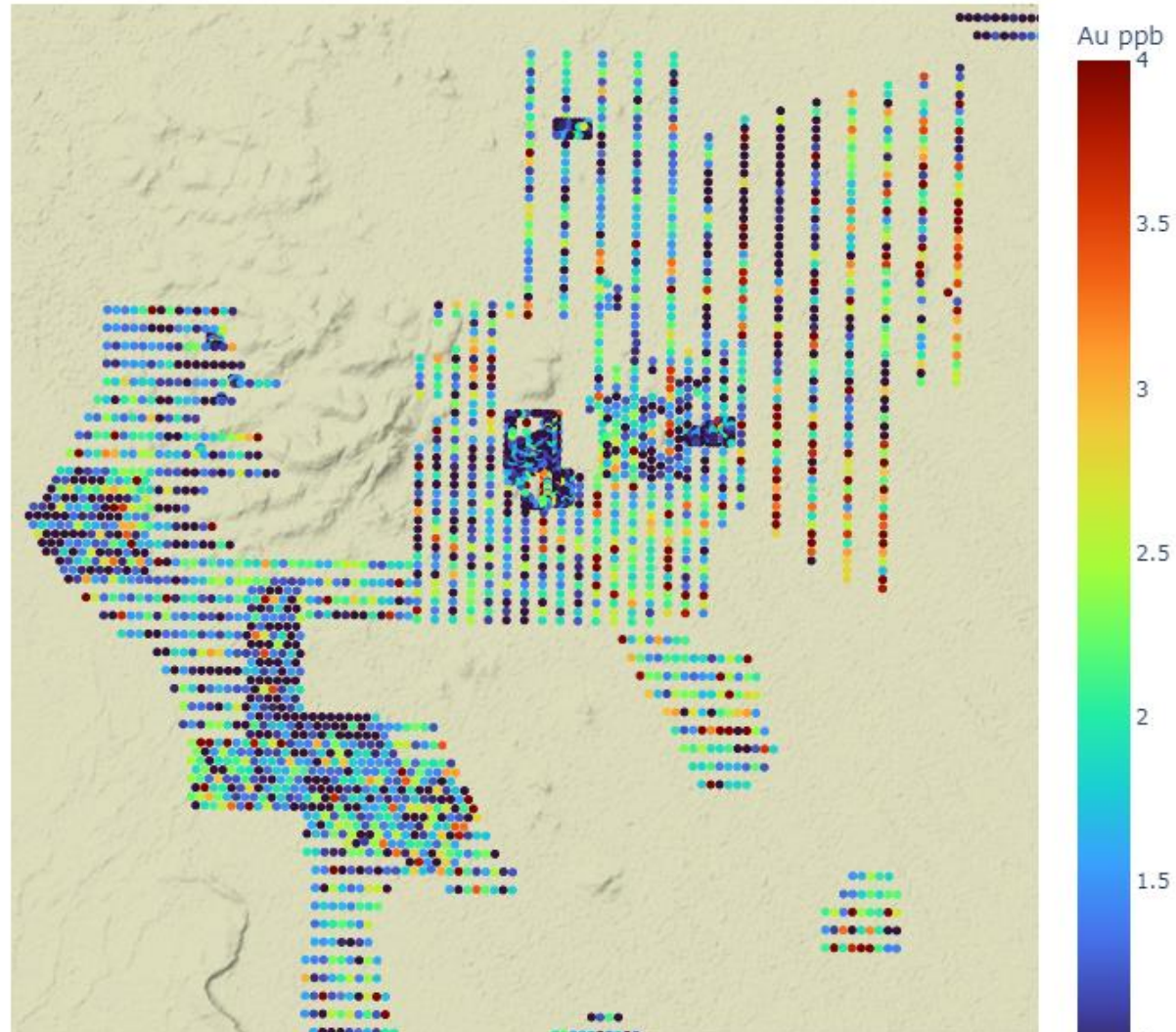
Historical soil data

Au



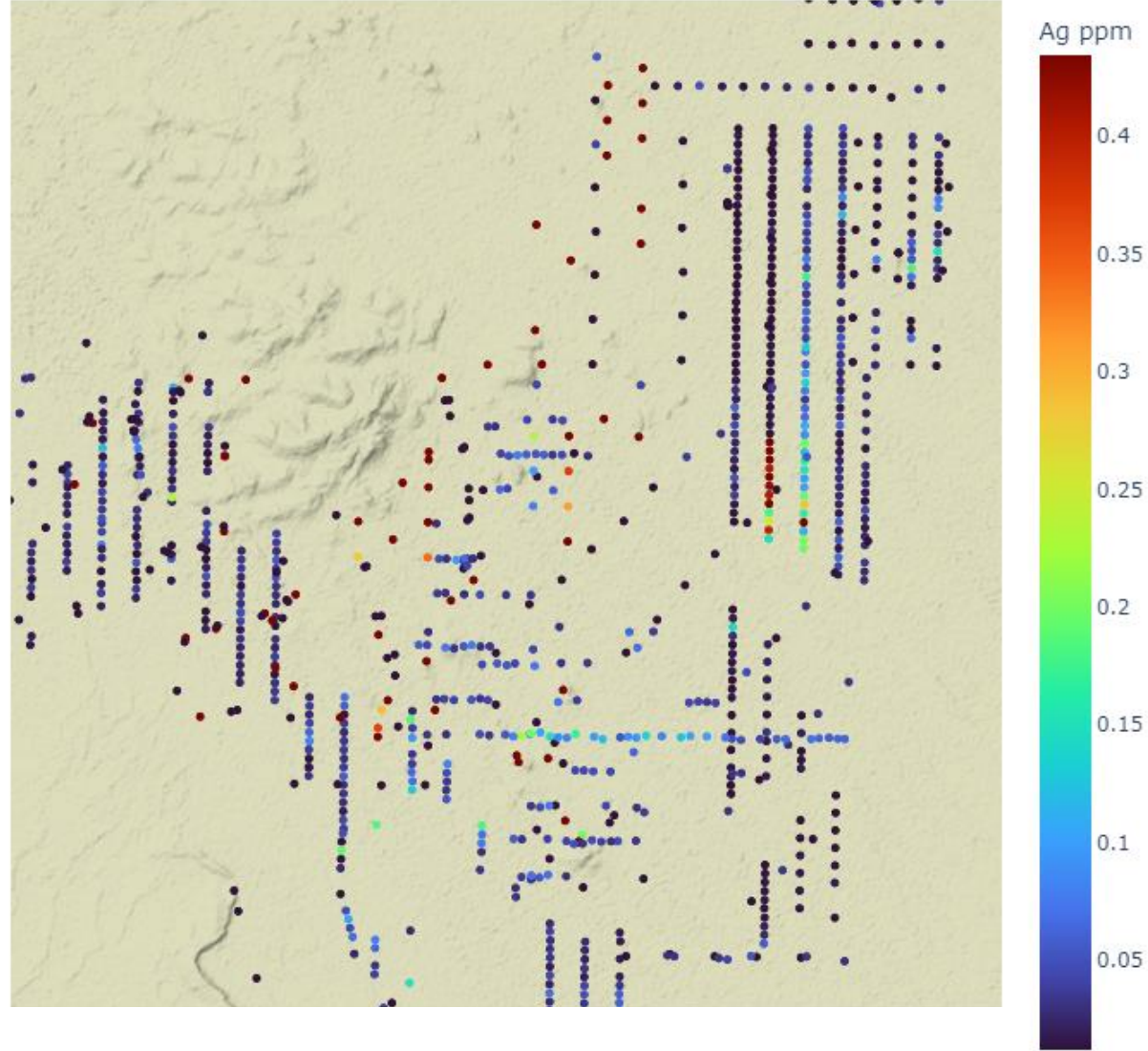
UltraFine

Au



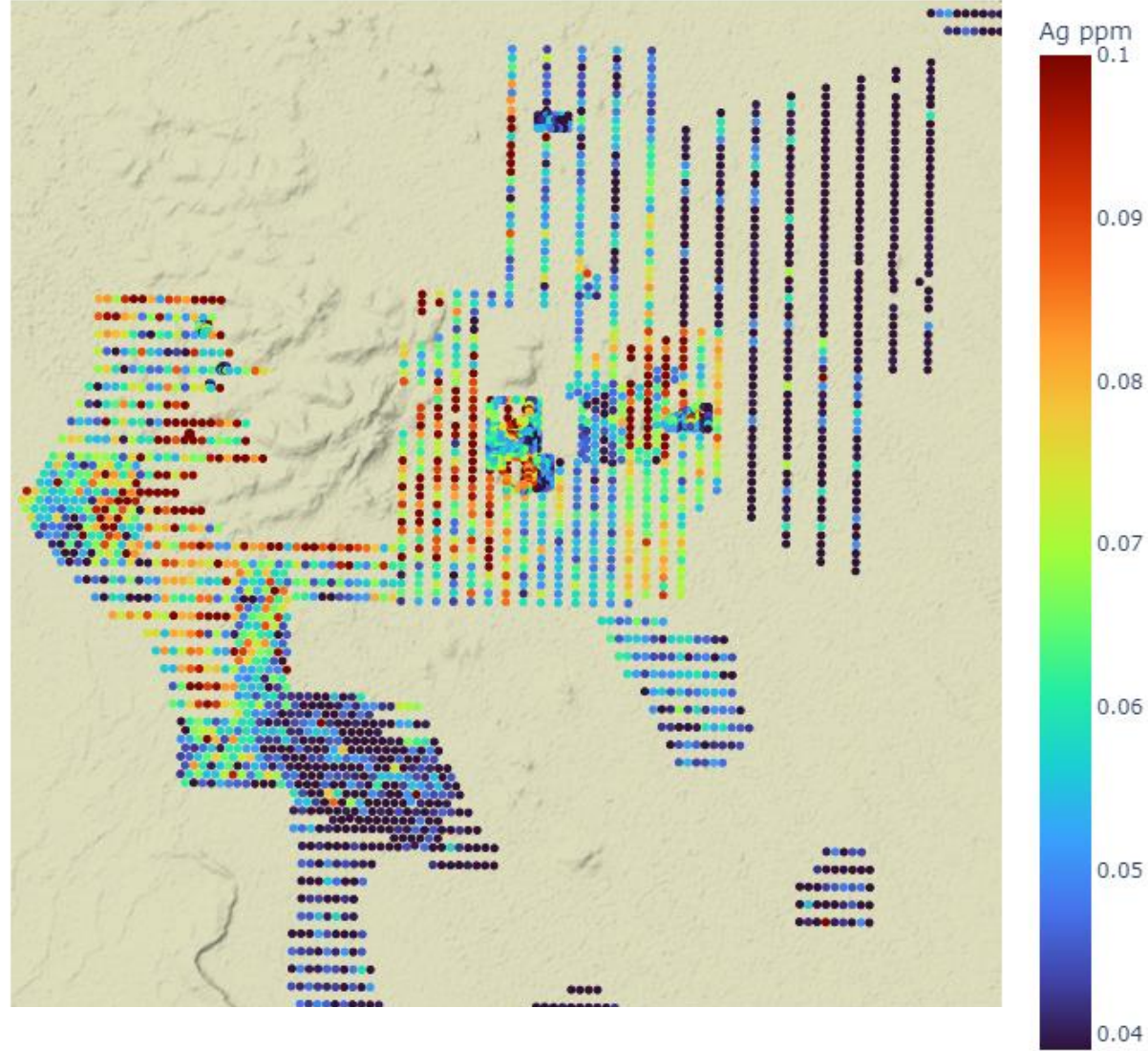
Historical soil data

Ag



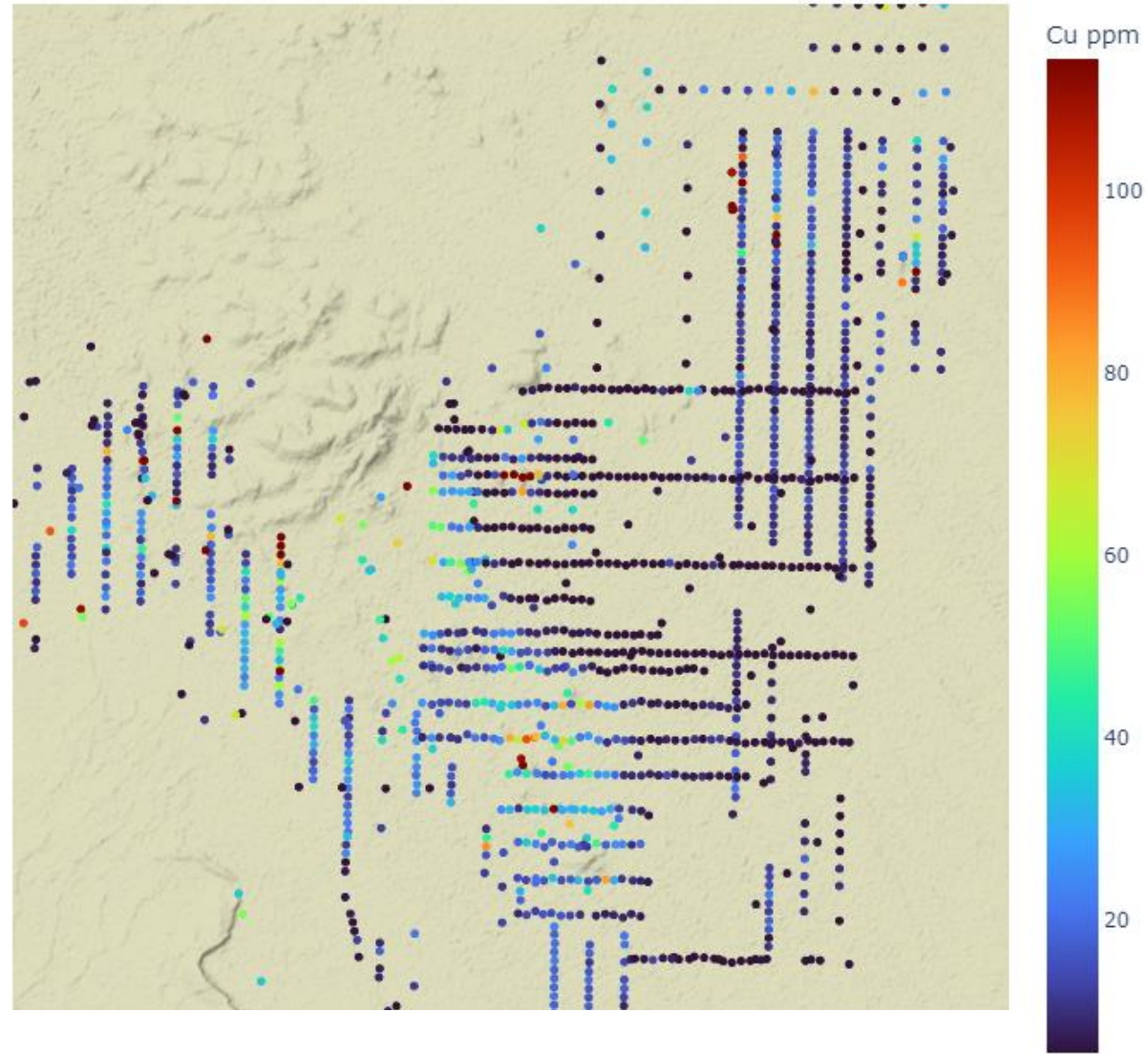
UltraFine

Ag



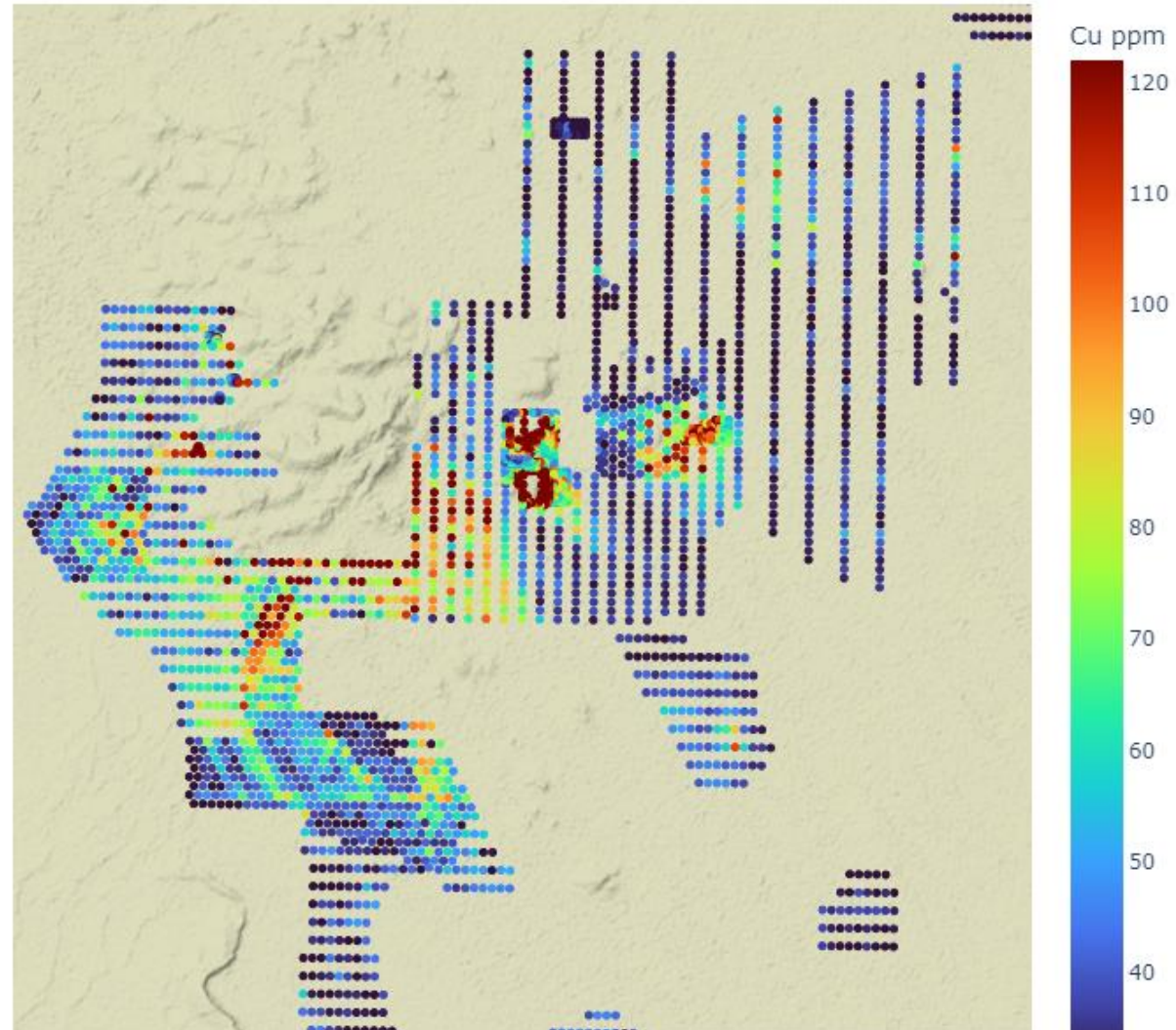
Historical soil data

Cu



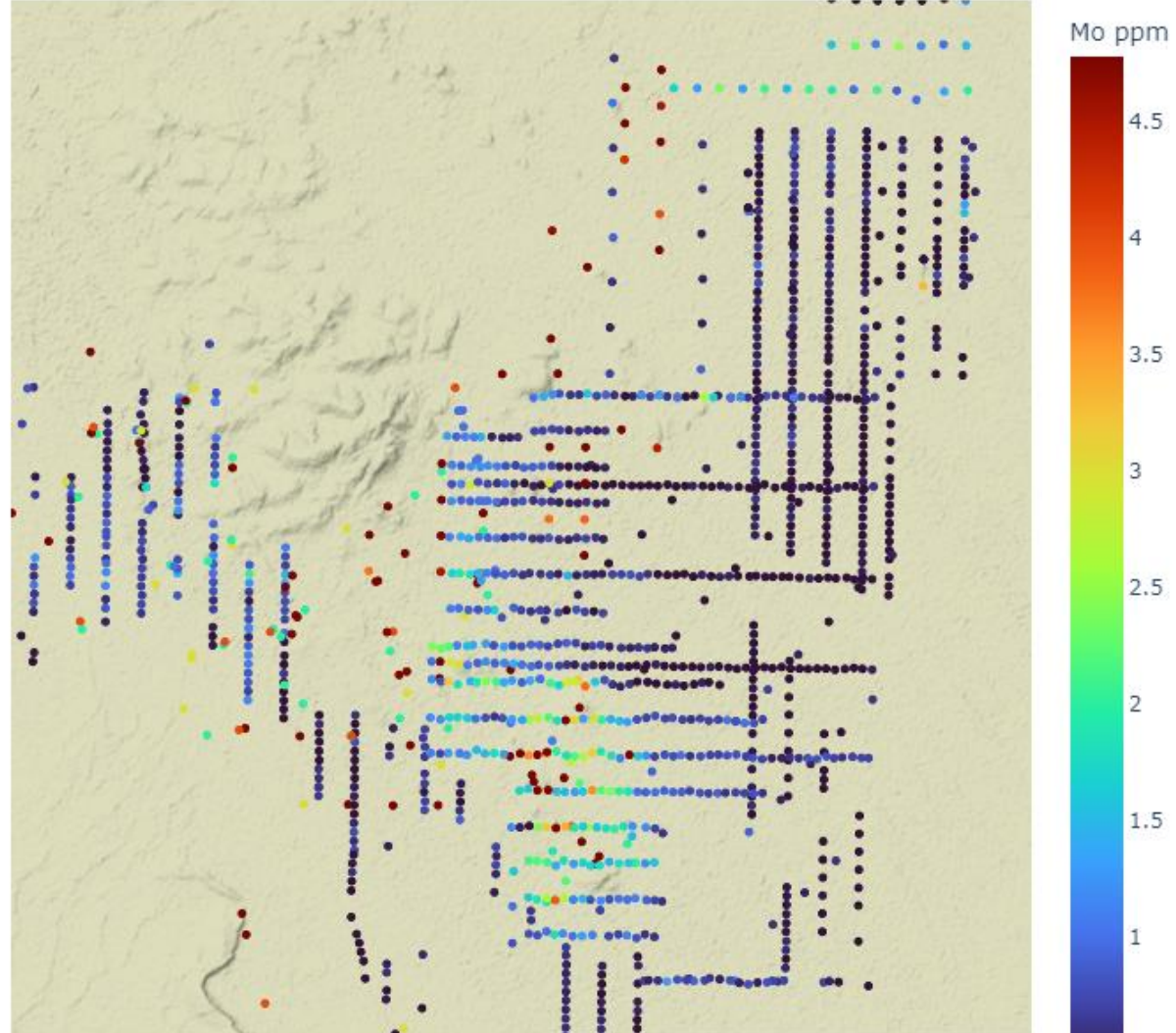
UltraFine

Cu



Historical soil data

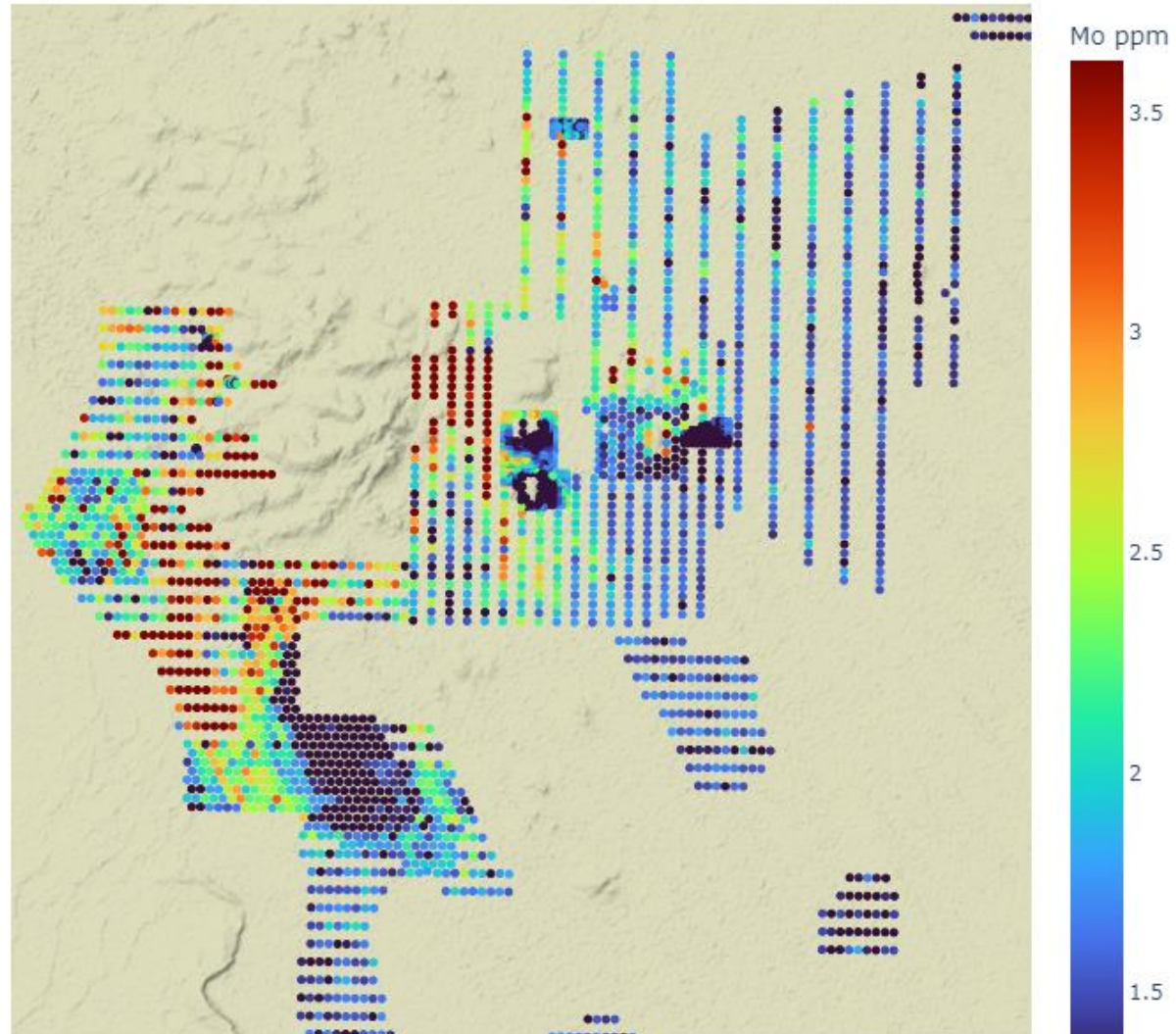
Mo





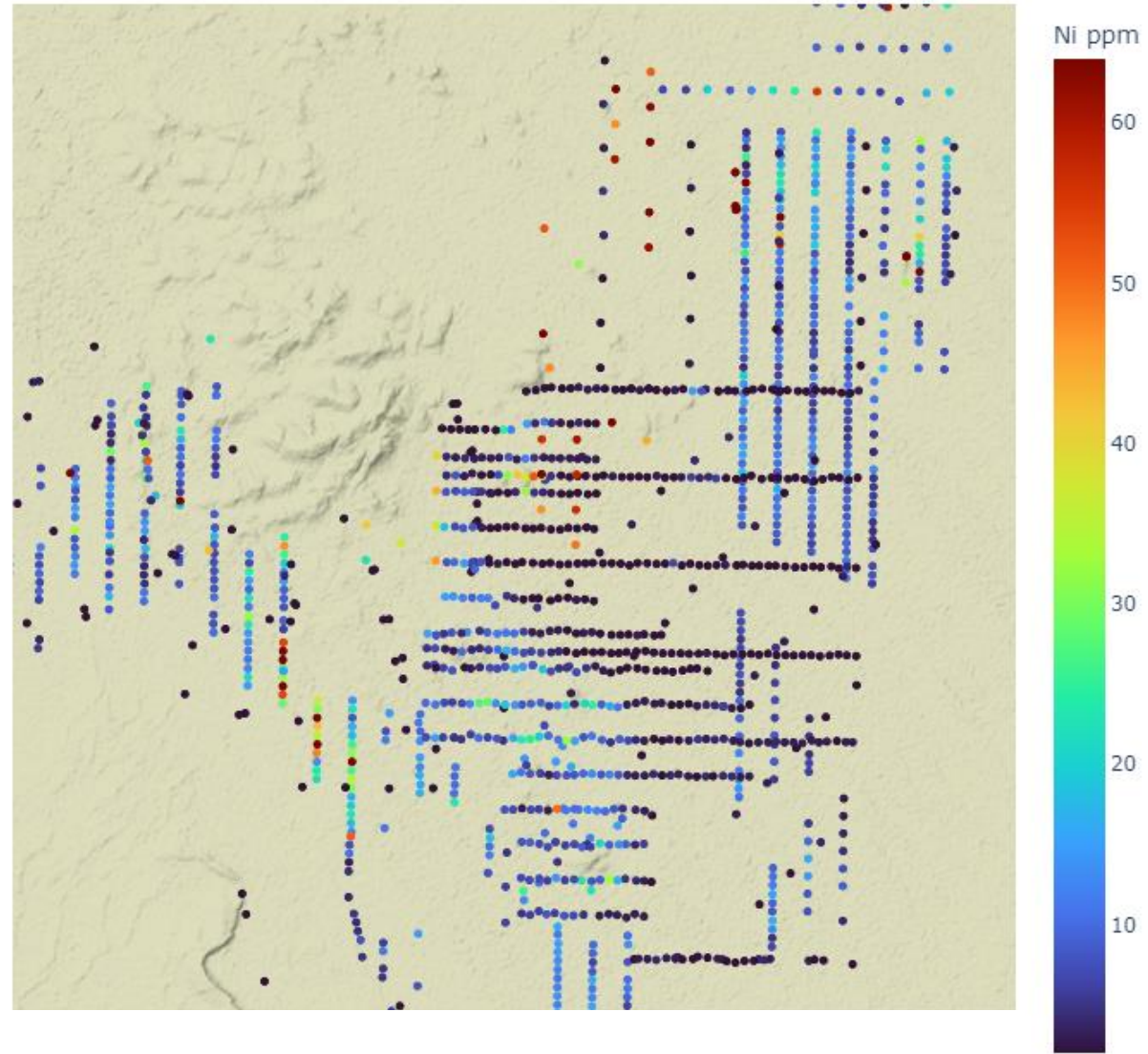
UltraFine

Mo



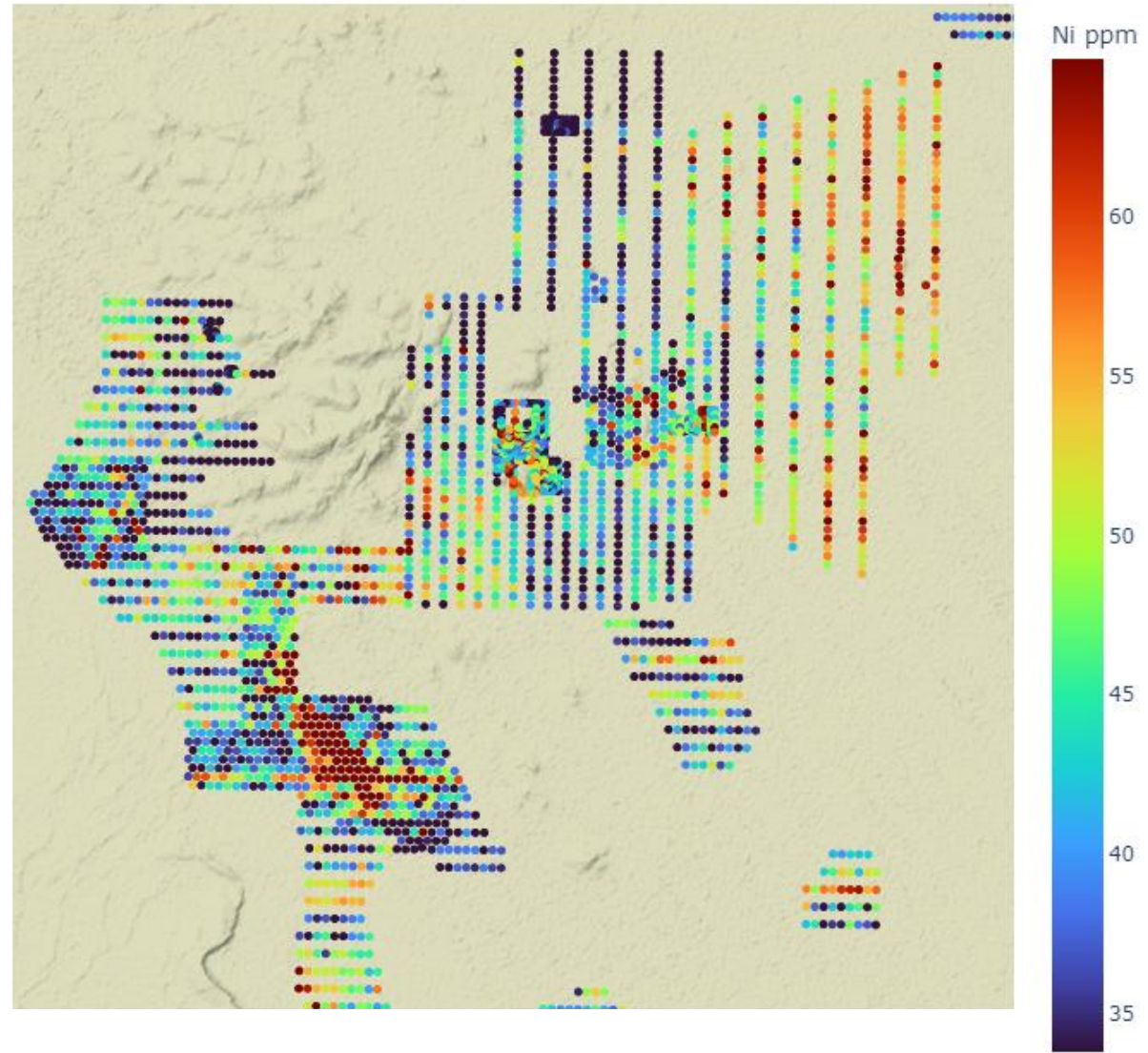
Historical soil data

Ni



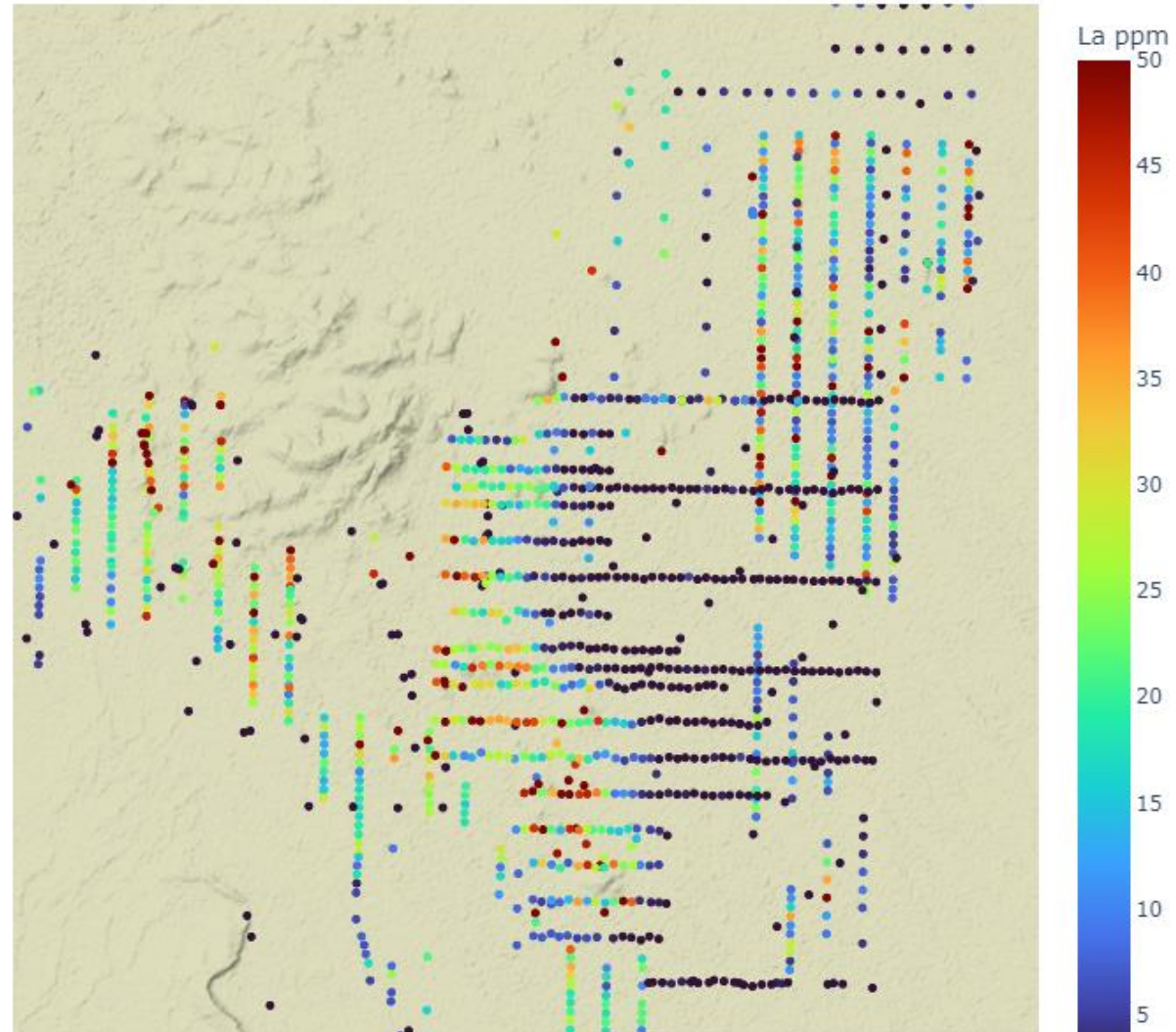
UltraFine

Ni



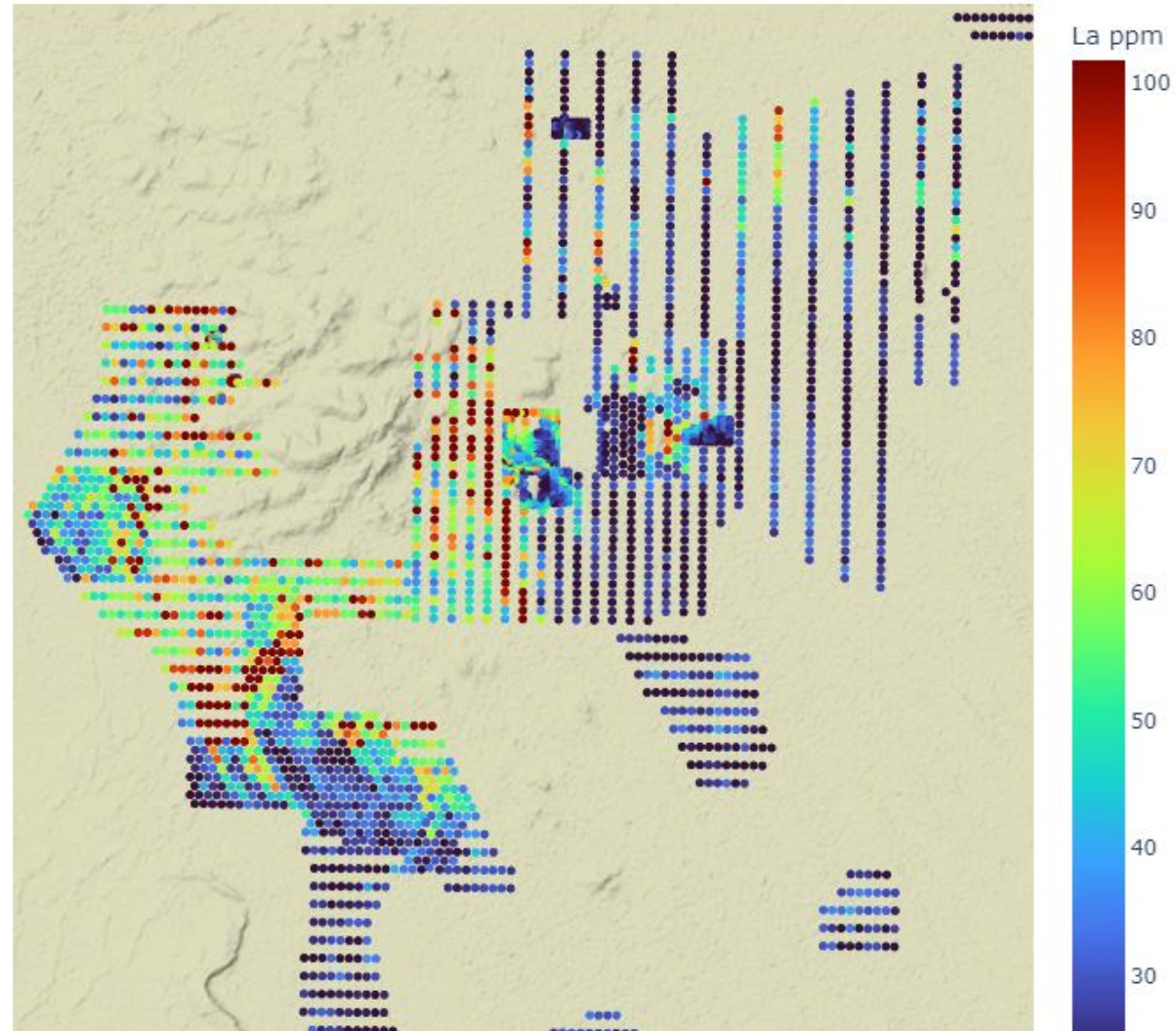
Historical soil data

La



UltraFine

La



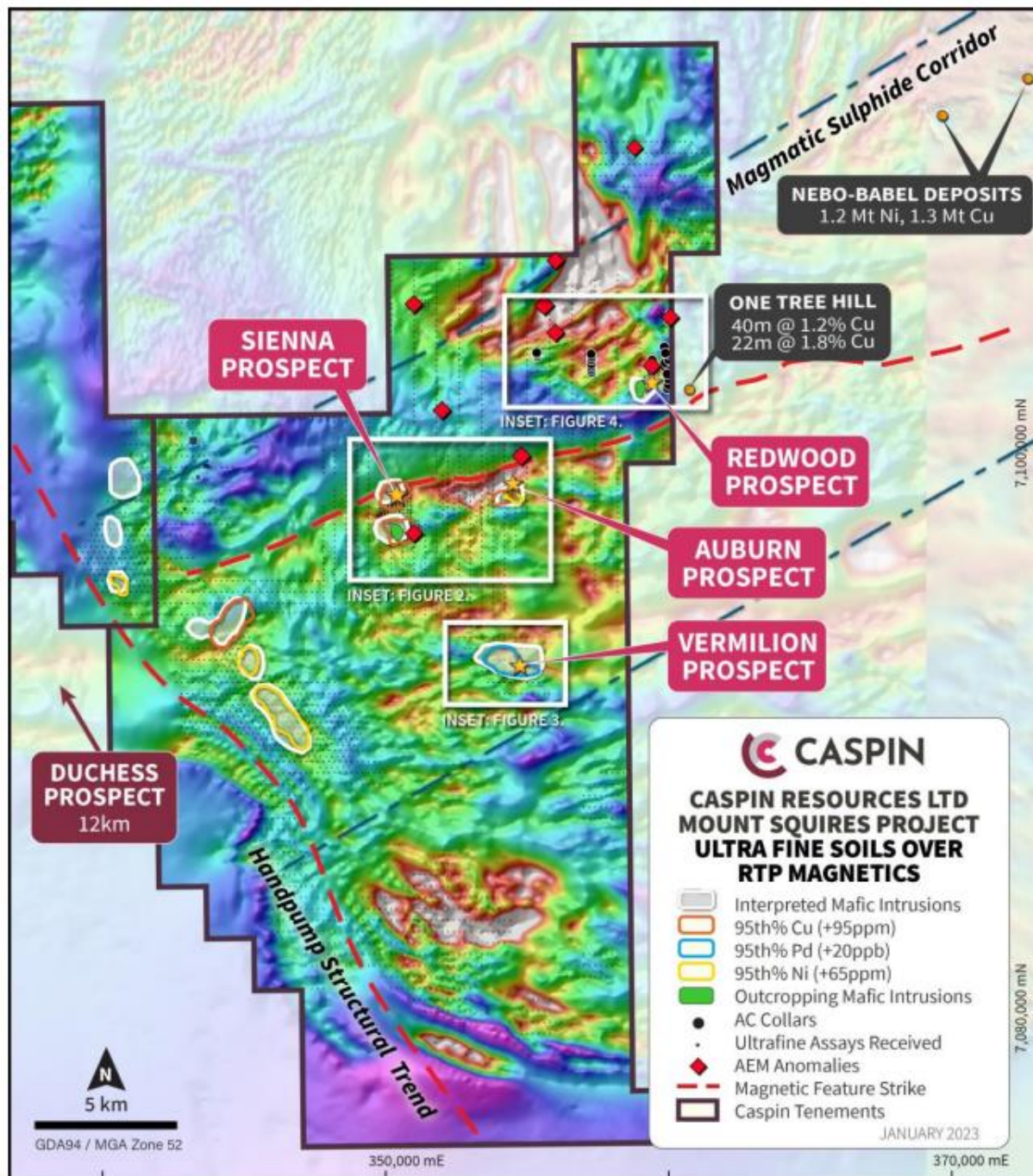


Figure 1. West Musgrave Ni-Cu mineralisation trend showing mapped and interpreted mafic intrusions and new soil geochemistry anomalies.

An ASX report pertaining to this data is presented by Caspin Resources Ltd here:

[Caspin ASX Release \(weblink.com.au\)](https://www.caspinresources.com.au/ASX-Release-2023-01-10)

Map Ref. Fig 1, Page 2.