



Orientation Comparing  
LabWest UltraFine (UFF)  
to  
25g Aqua Regia (AR)  
and  
Partial Leach (PL)

**Area:** Gascoyne Ashburton Basin

**Regolith:** 1 to 20m alluvial cover

**Mineralisation:** Orogenic Au, Cu/Au Porphyry

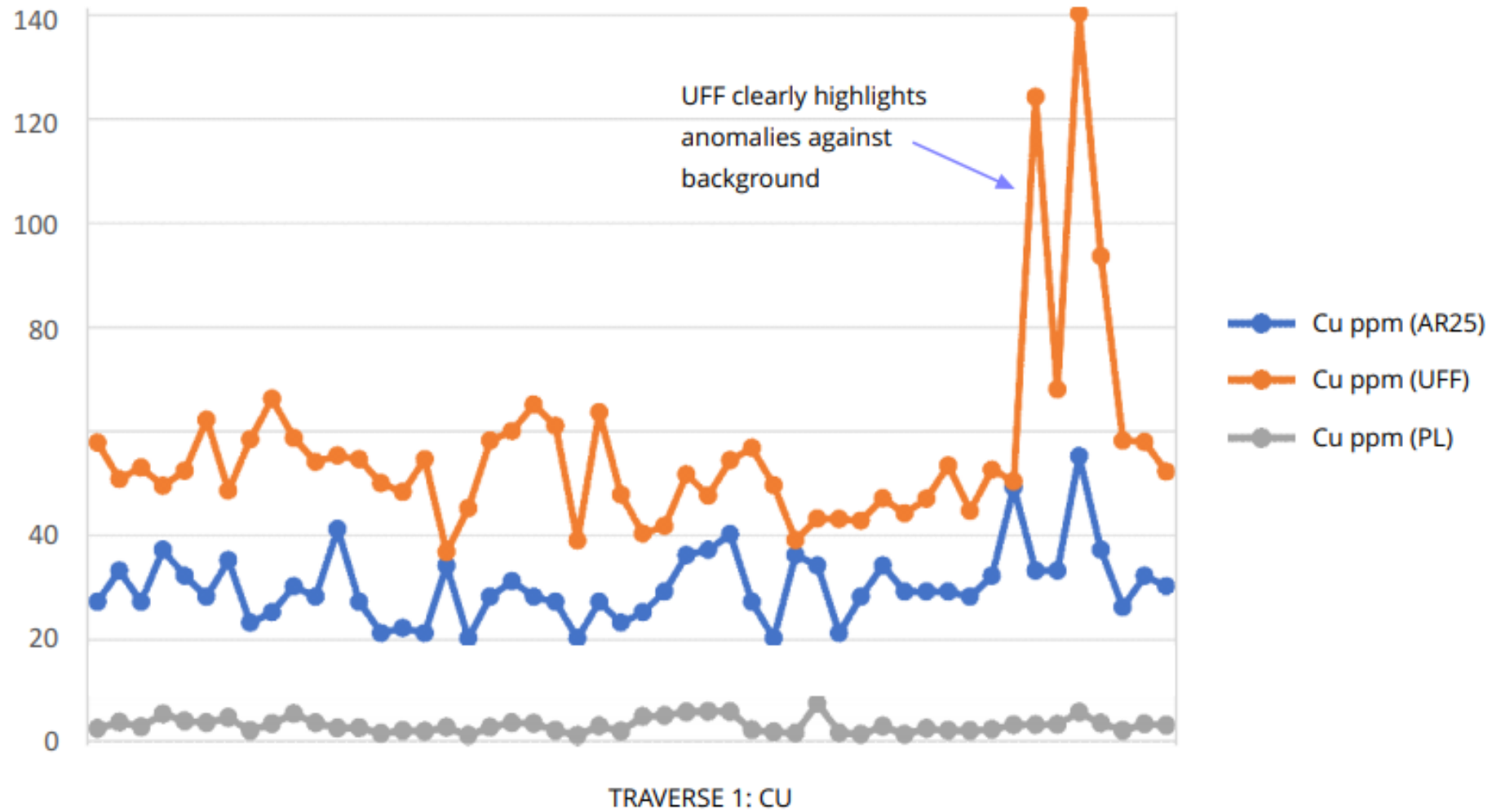
**Target:** Au

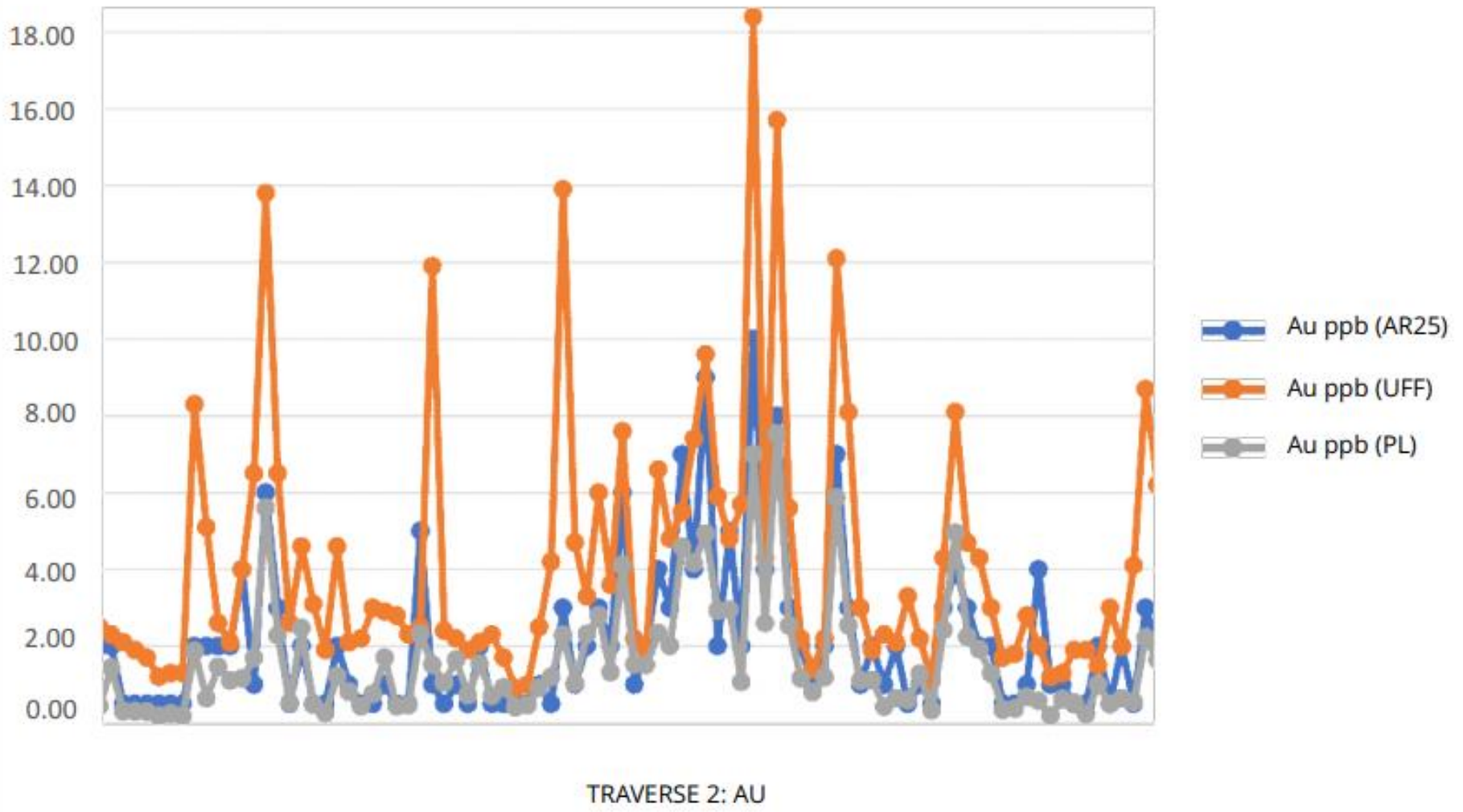
**Pathfinder Elements used:** Cu, As

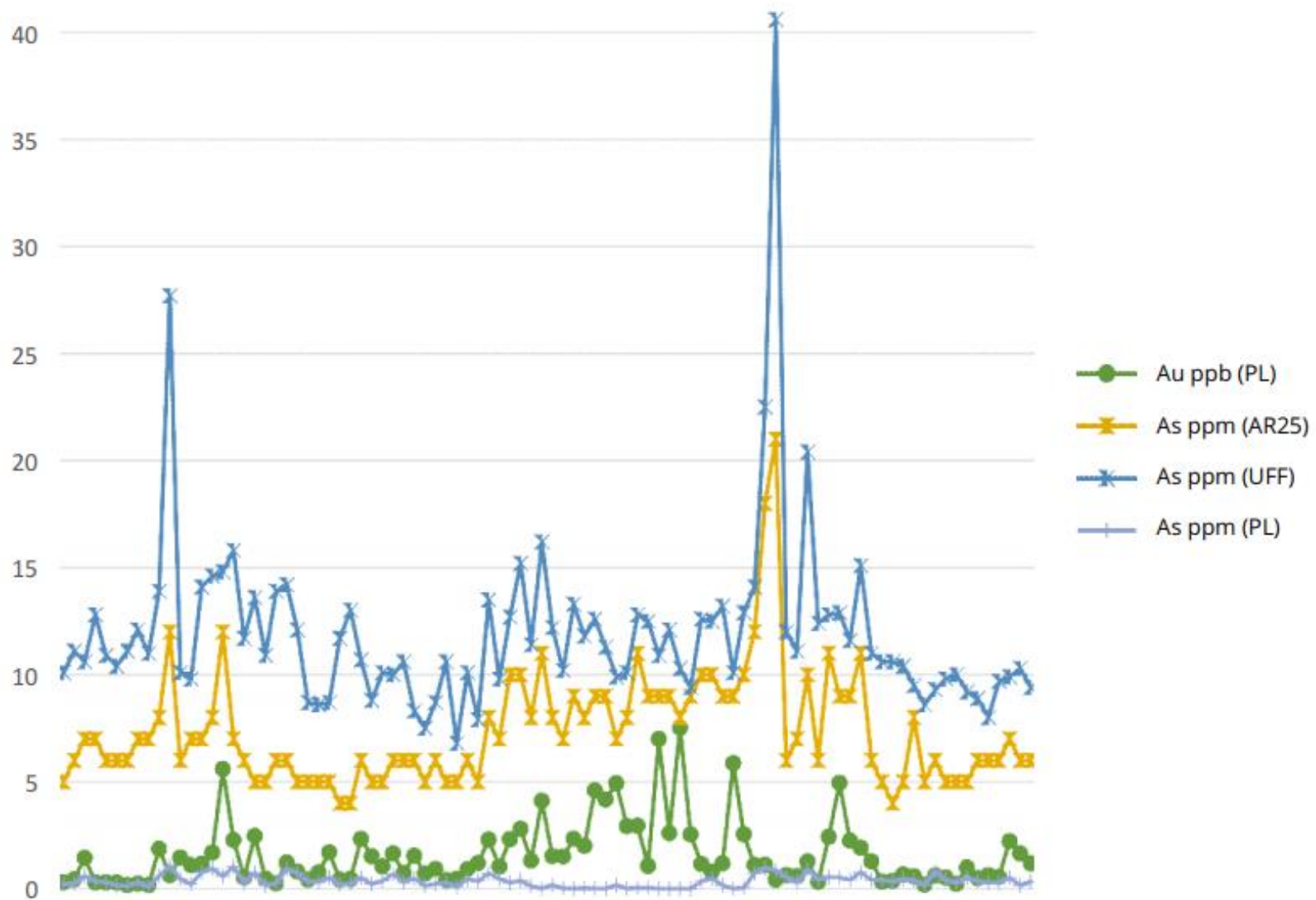
# LABWEST











TRAVERSE 2: AS