



Orientation Comparing  
UltraFine (UFF) < 2 µm clay fraction  
to  
Standard Soil Aqua Regia (MAR)  
< 250 µm sieved

**Area:** Paterson

**Regolith:** Approximately 40m transported cover

**Mineralisation:** Copper Gold Porphyry

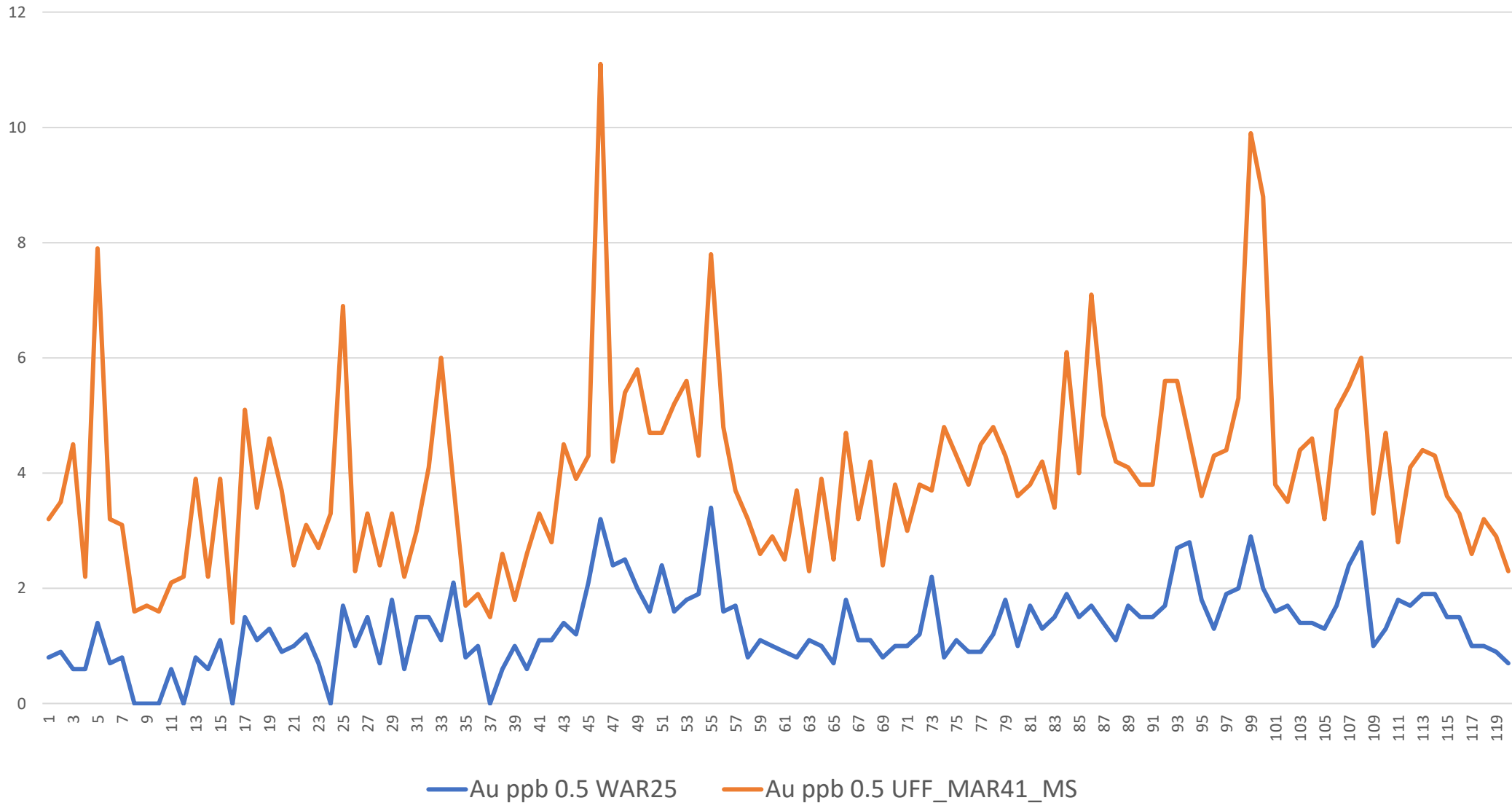
**Target:** Au, Cu

**Pathfinder Elements:** Ag, As, Pb, Bi

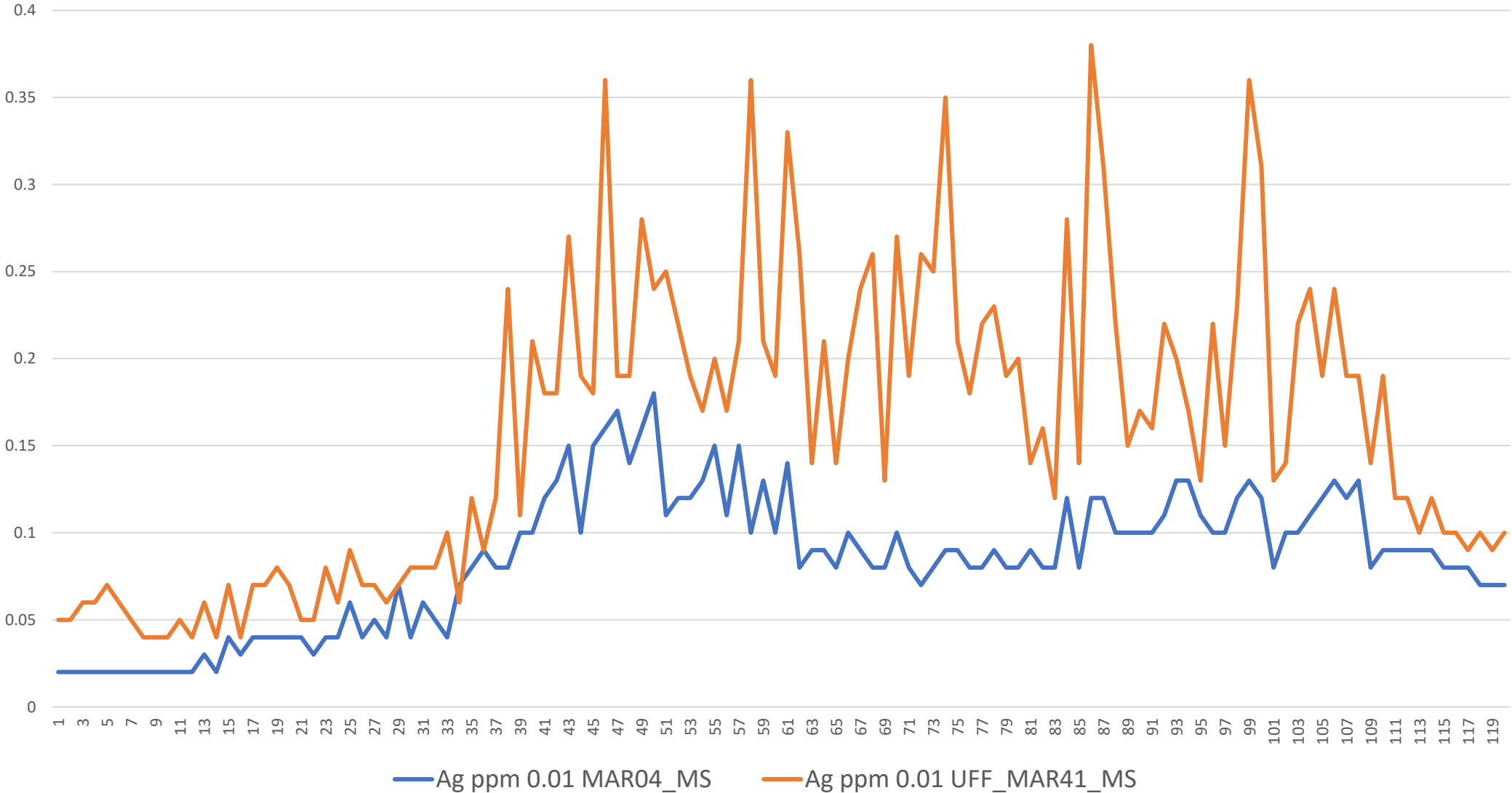
# LABWEST



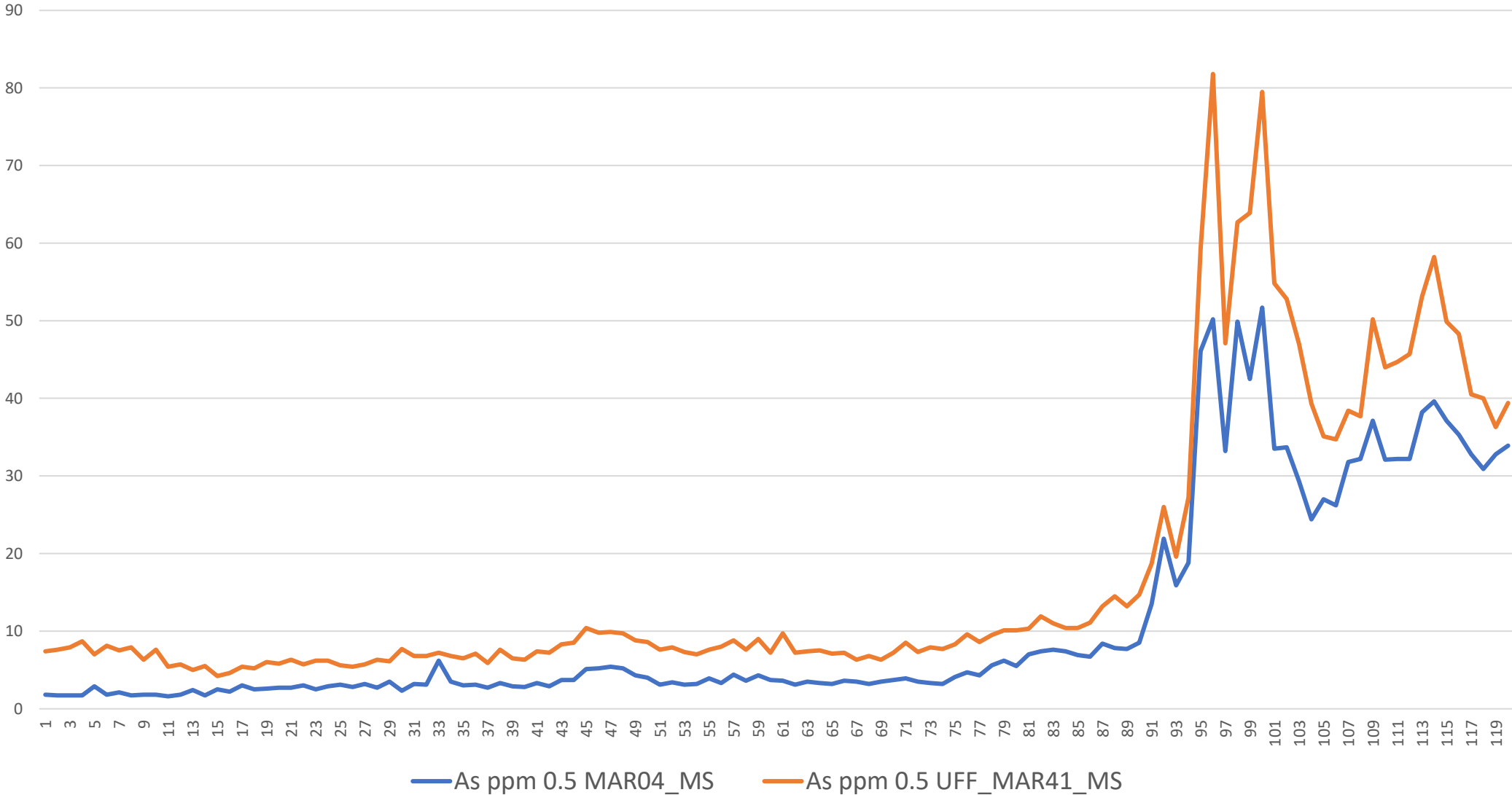
# LabWest UltraFine vs 25g Soil Aqua Regia



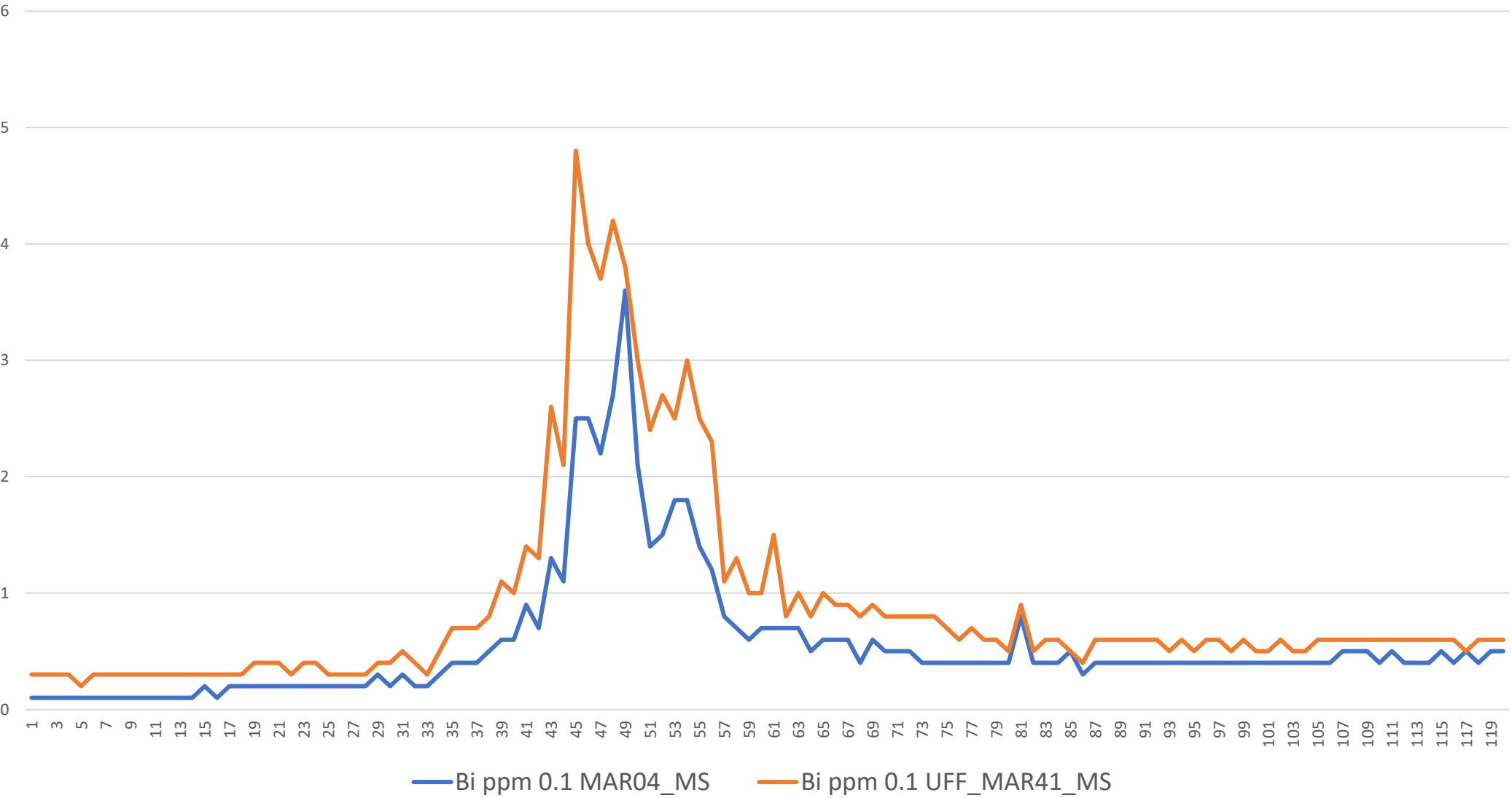
# LabWest UltraFine vs Standard Soil Aqua Regia



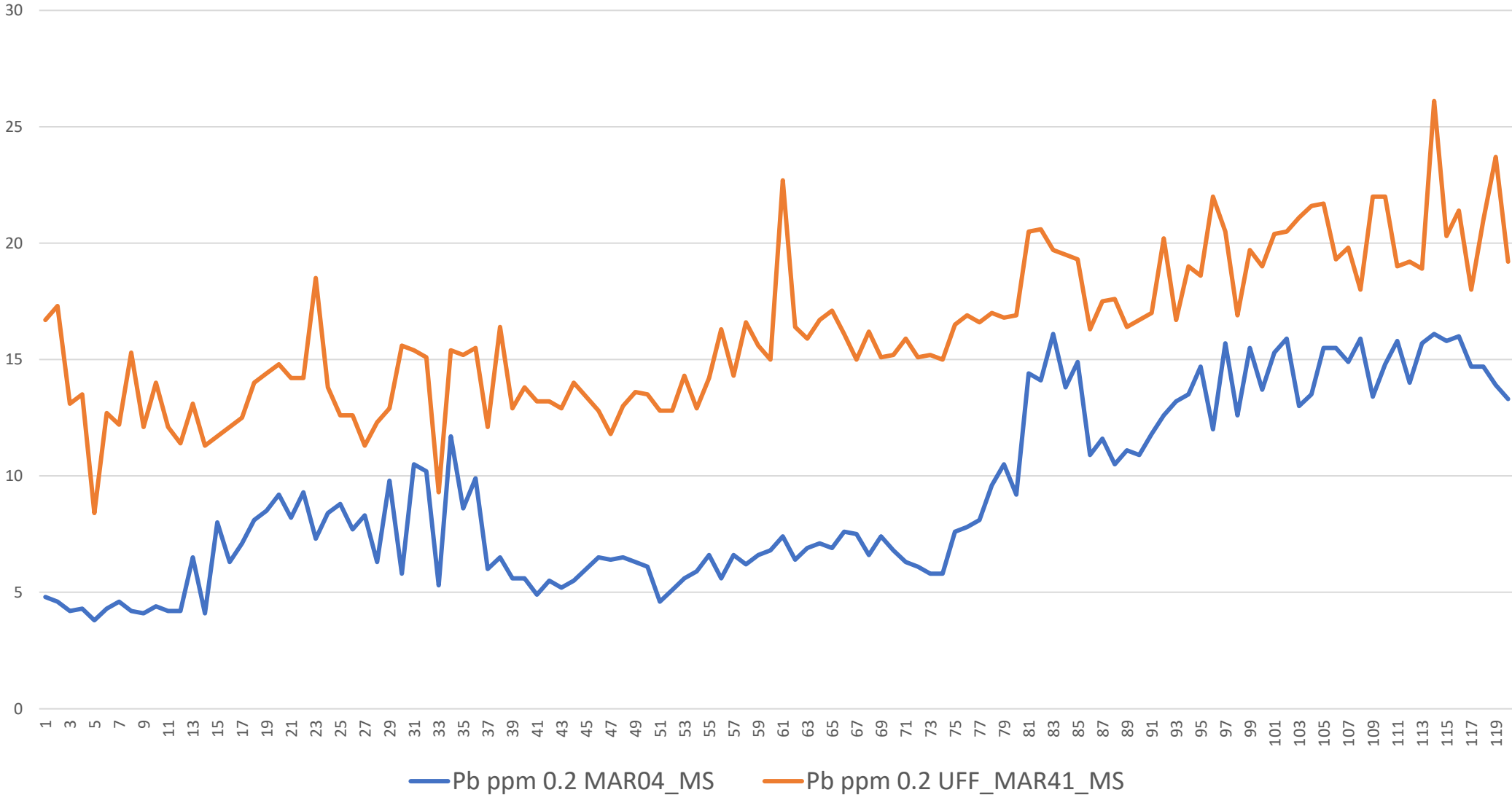
# LabWest UltraFine vs Standard Soil Aqua Regia



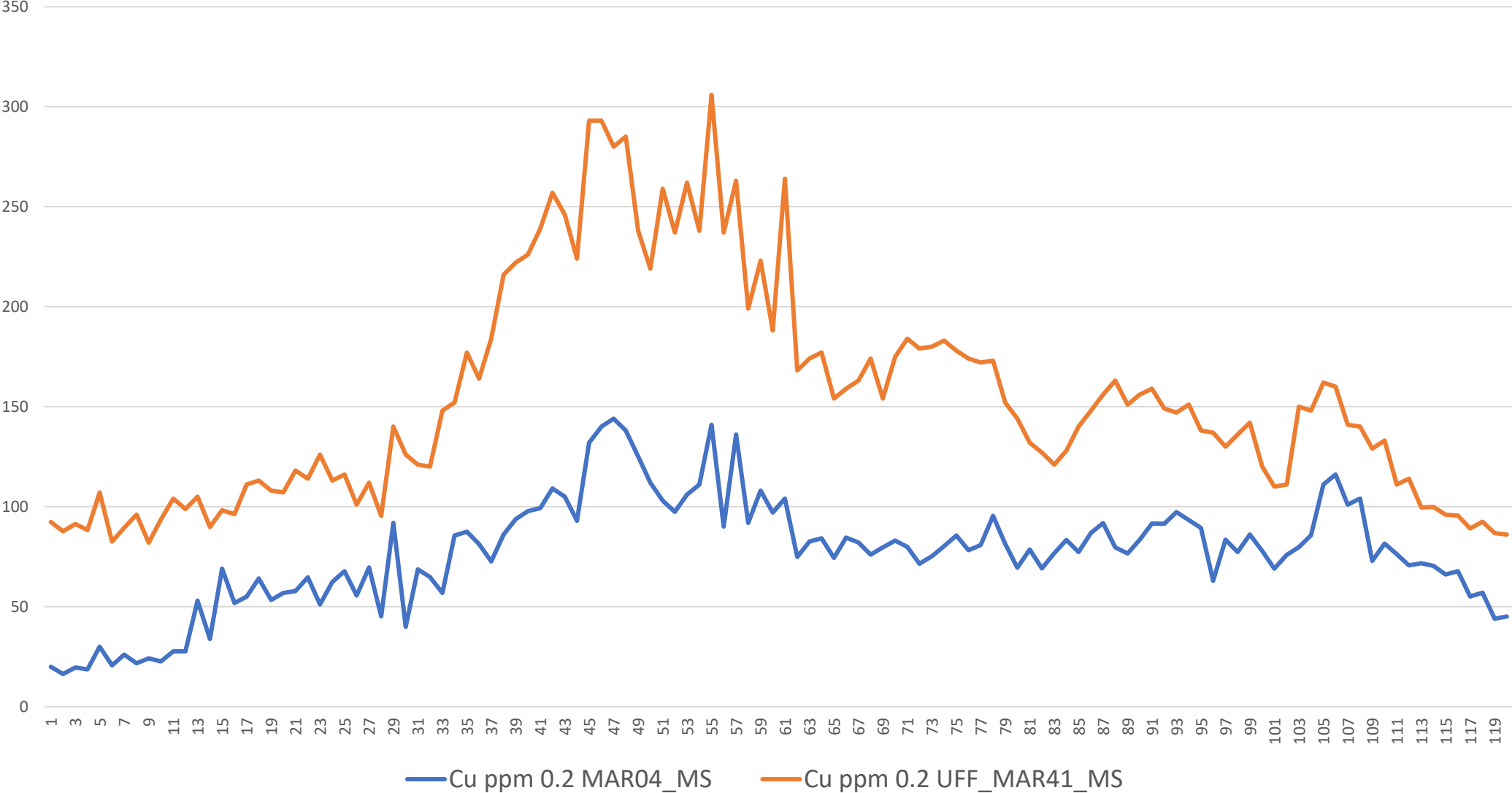
# LabWest UltraFine vs Standard Soil Aqua Regia



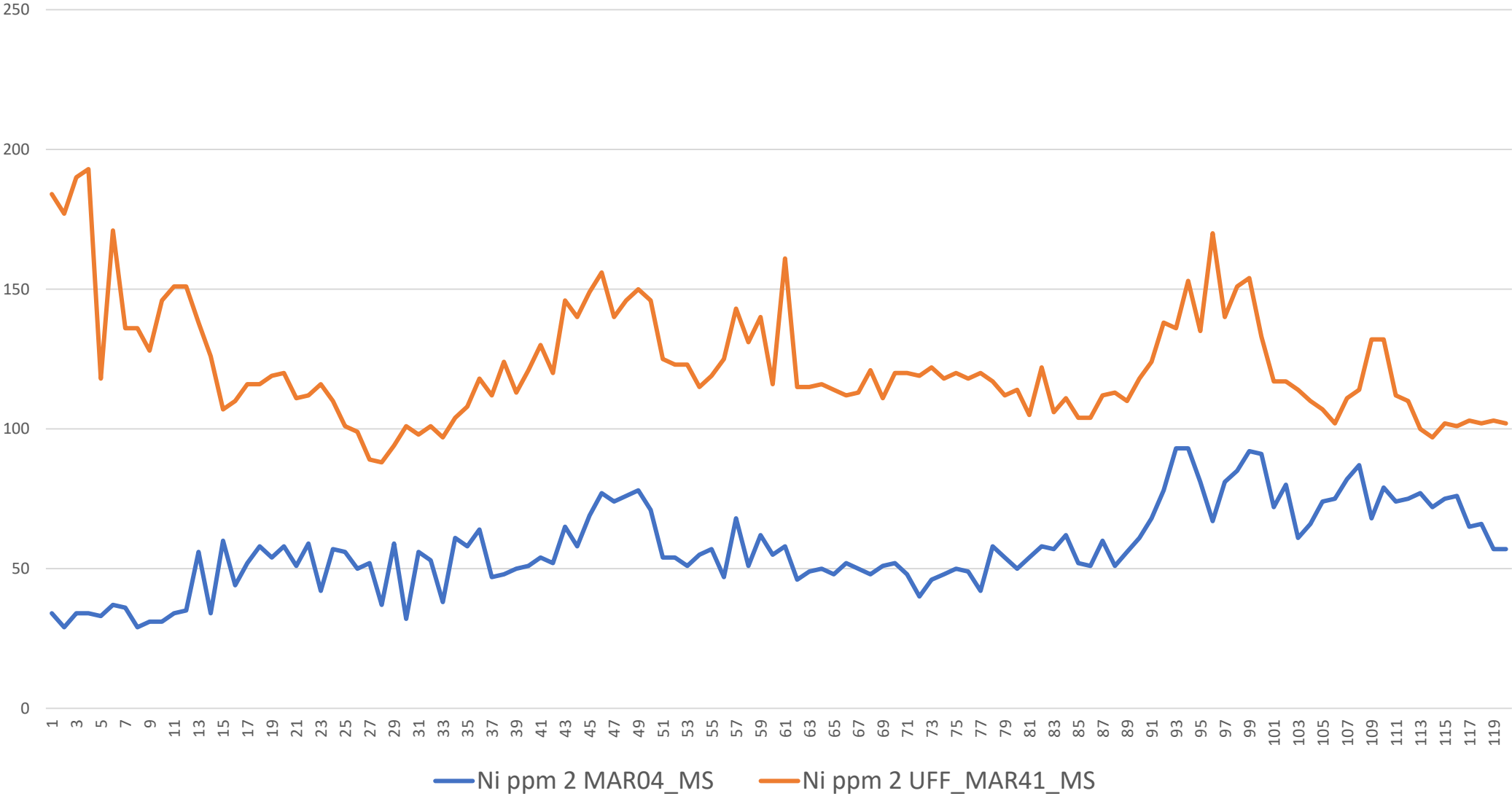
# LabWest UltraFine vs Standard Soil Aqua Regia



# LabWest UltraFine vs Standard Soil Aqua Regia

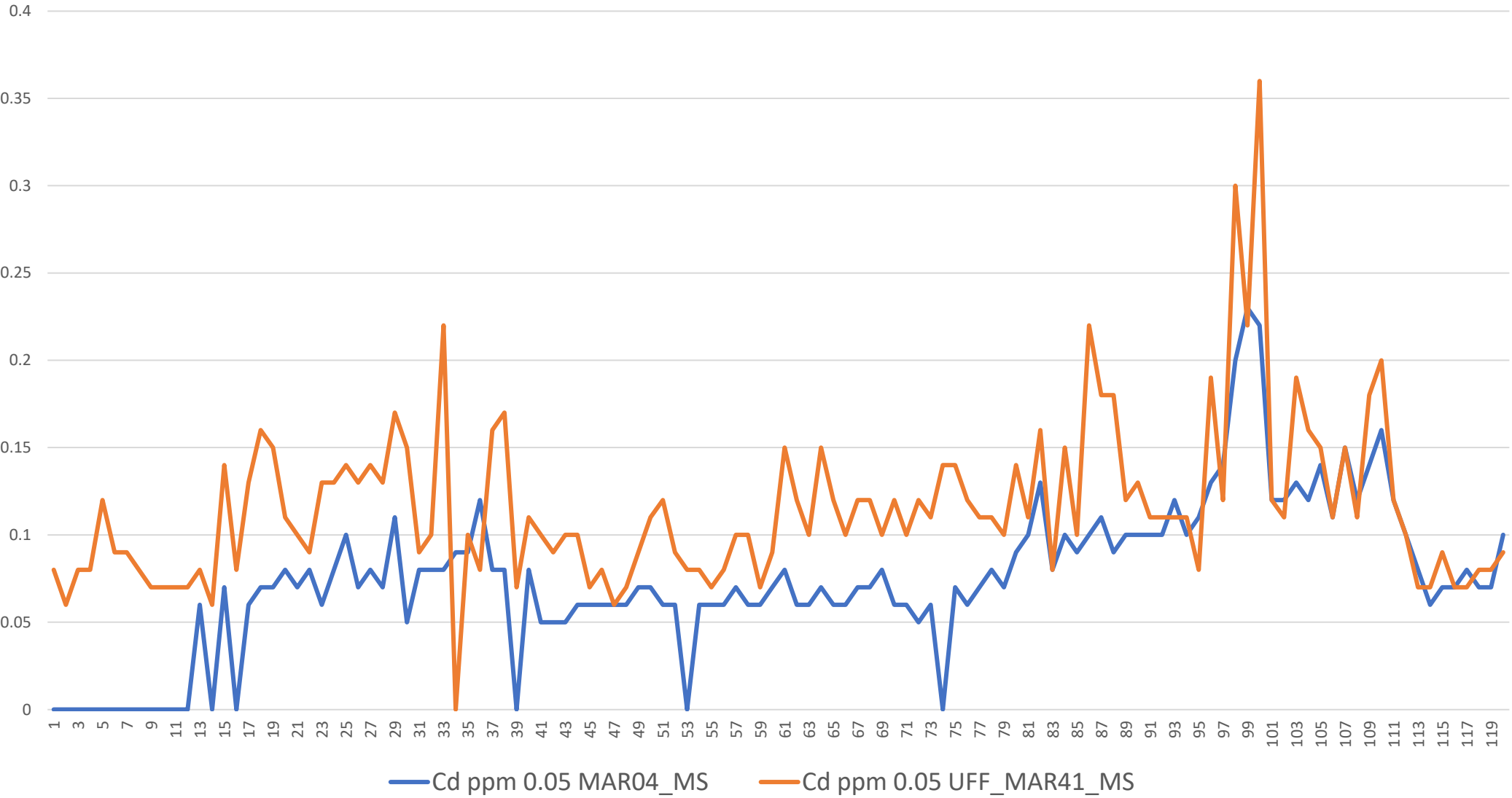


# LabWest UltraFine vs Standard Soil Aqua Regia

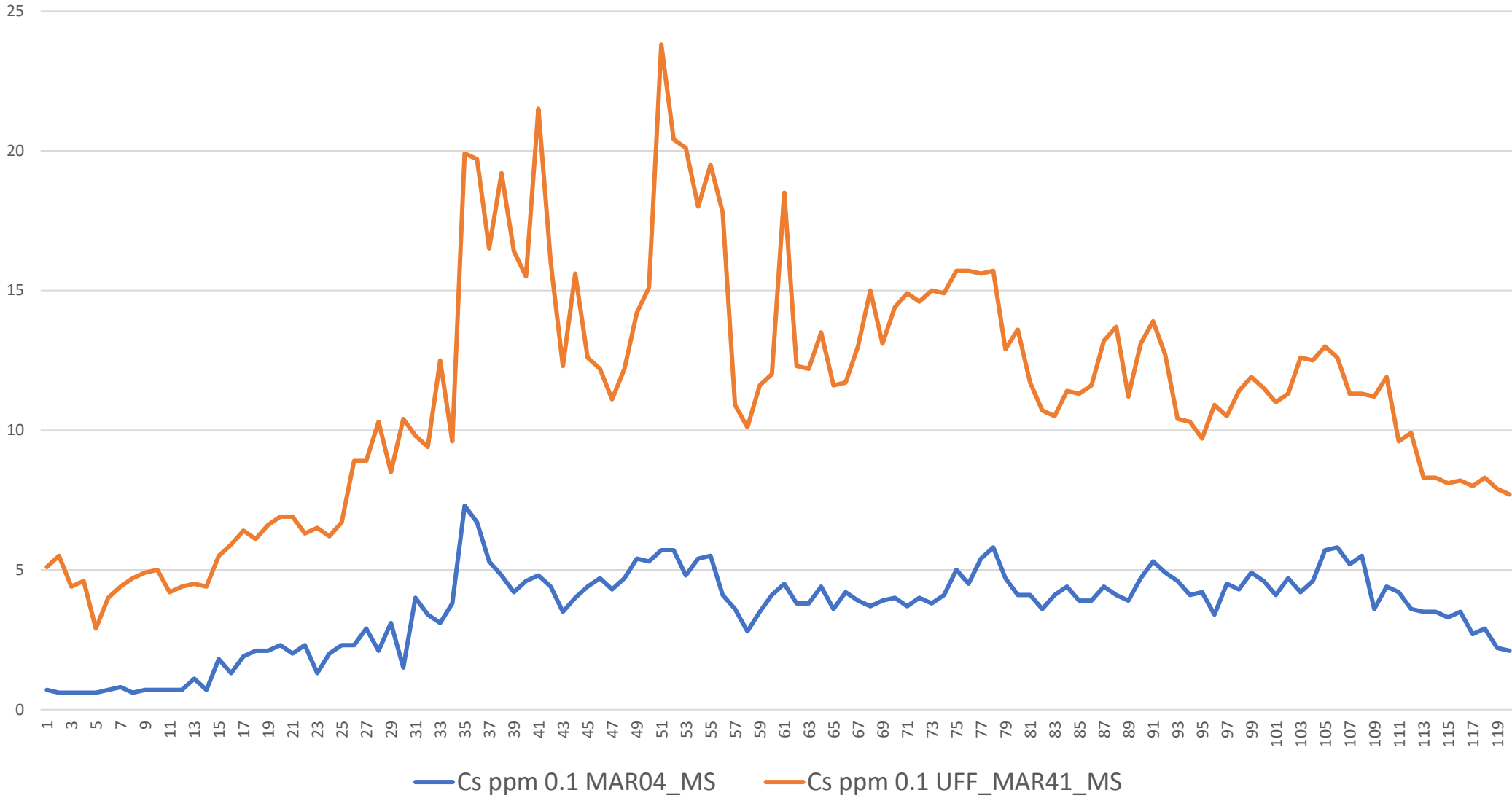




# LabWest UltraFine vs Standard Soil Aqua Regia



# LabWest UltraFine vs Standard Soil Aqua Regia



# LabWest UltraFine vs Standard Soil Aqua Regia

